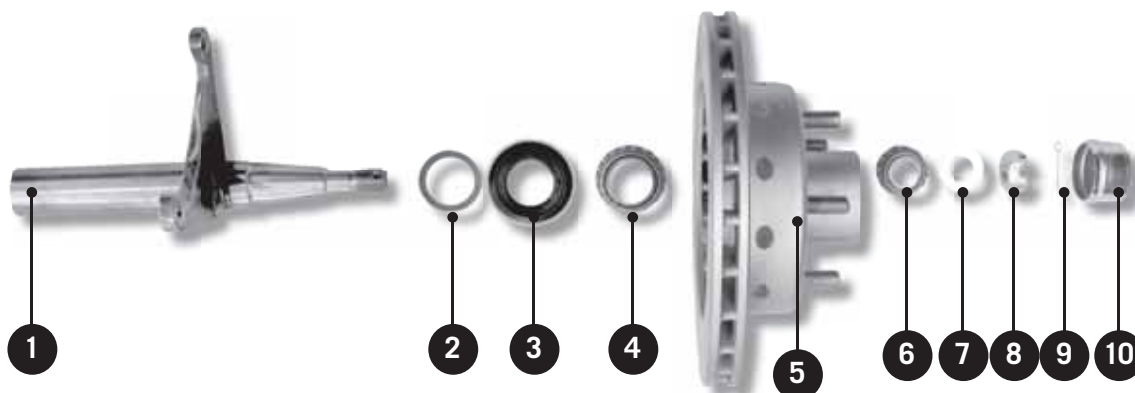
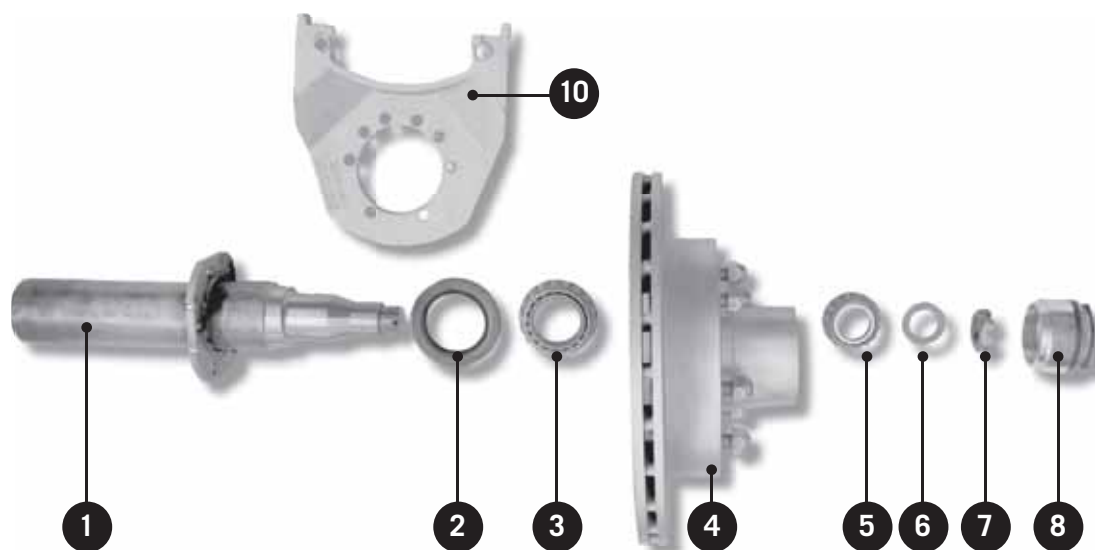


1500KG & 1750KG ONE-PIECE VENTED ROTOR



| KEY | DESCRIPTION | 1500KG | 1750KG |
|-----|------------------------|--------------------------|--------------------------|
| 1 | Axle | TE192212-C | TE192215-C |
| 2 | Washer Marine Seal | TE190144 | N/A |
| 3 | Marine Seal | TE190143 | TE190145 |
| 4 | Inner Bearing Assembly | TE190189-21 / LM67048/10 | TE190189-23 / L68149/10 |
| 5 | Vented One-Piece Rotor | TE192DROTOR10 | TE192DROTOR10 |
| 6 | Outer Bearing Assembly | TE190189-20 / LM11949/10 | TE190189-22 / LM12749/10 |
| 7 | Washer | TE190190-08 | TE190190-08 |
| 8 | Slotted Nut 3/4 UNF | TE190178 | TE190178 |
| 9 | Split pin M4x32 | TE190190-01 | TE190190-01 |
| 10 | Dust Cap | TE190161 | TE190161 |

2750KG SINGLE-PIECE VENTED ROTOR



| KEY | DESCRIPTION | 2750KG |
|-----|---|--|
| 1 | Axles | TE192219 |
| 2 | Hub Seal 2 Lip Marine Seal Collar Hub Seal Marine | TE190148-2 TE190148-4 TE190148-3 |
| 3 | Inner Bearing Assembly | TE190189-26 25580/20 |
| 4 | Rotor Hub | TE192KU2 |

| KEY | DESCRIPTION | 2750KG |
|-----|------------------------|----------------------------|
| 5 | Outer Bearing Assembly | TE190189-37 15123/15245 |
| 6 | Washer | TE190190-10 |
| 7 | Slotted Nut | 1" UNF 14TPI |
| 8 | Dust Cap | TE192KU14 |
| 10 | Caliper Mounting Plate | TE192KMB12U |