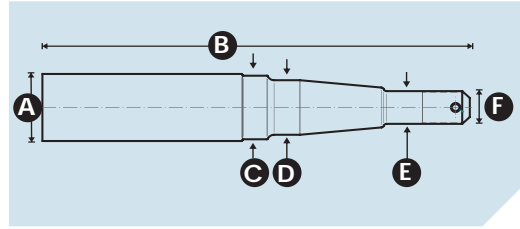


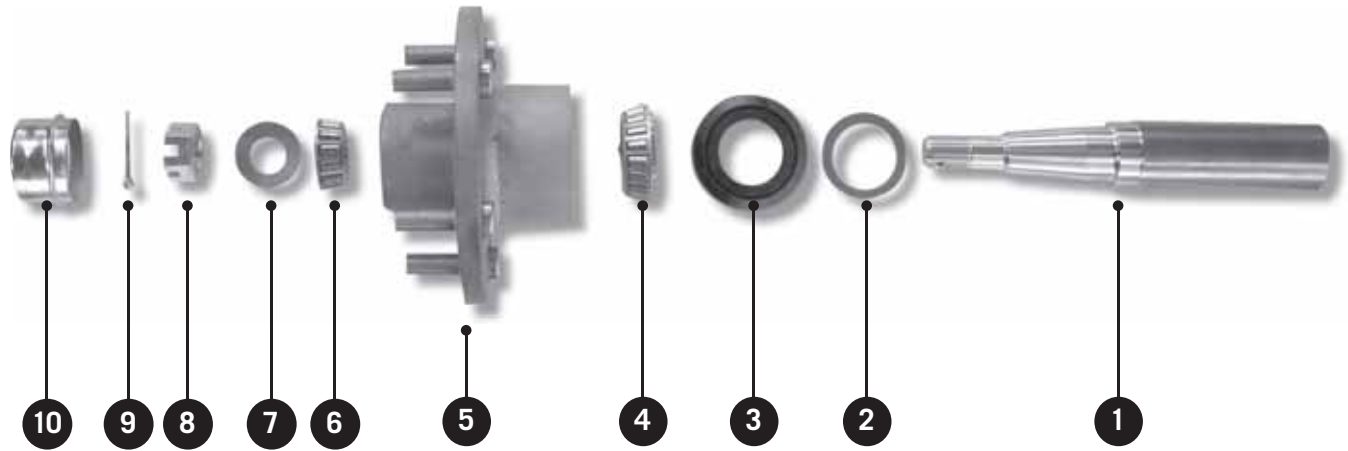
STUB AXLE PROFILES

CM axles are all CNC machined from 1045 medium tensile steel.

A	B	C	D	E	F	PART	DESCRIPTION
39	225	37	32	19	3/4 UNF	TE190101	9" 1500 Kg Axle
39	300	37	32	19	3/4 UNF	TE190102	12" 1500 Kg Axle
45	300	43	35	22	3/4 UNF	TE190107	12" 1750 Kg Axle
45	275	42	35	25	3/4 UNF	TE190108	11" 2000 Kg Axle prior to June 07
50	300	47	38	25	3/4 UNF	TE190110	12" 2000 Kg Axle after June 07



1500 / 1750 / 2000KG



SPARE PARTS

ITEM	DESCRIPTION	1500KG	1750KG	>July 07 2000KG	July 07 > 2000KG
1	Axle	9"=TE19 0101 12"=TE190102	12"=TE190107 —	11"=TE190108 —	12"=TE190110 —
2	Washer Marine Seal Only	TE190144	—	—	TE190147-2
3	Hub Seal Marine 2 Lip	TE190143 TE190142	TE190145 TE190146	— TE190147	TE190147-1 —
4	Inner Bearing Assembly	TE190189-21 LM67048/10	TE190189-23 L68149/1	TE190189-25 25877/21	TE190189-24 LM29748/10
5*	Hub	POA	POA	TE190130	TE191AC 2000kg
6	Outer Bearing Assembly	TE190189-20 LM11949/10	TE190189-22 LM12749/10	TE190189-09 30205	TE190189-09 30205
7	Washer 3/4	TE190190-08	TE190190-08	TE190190-08	TE190190-08
8	Slotted Nut 3/4unf	TE190178	TE190178	TE190178	TE190178
9	Split Pin 4x32	TE190190-01	TE190190-01	TE190190-01	TE190190-01
10	Dust Cap	TE190161 1.78"	TE190161 1.78"	TE190164 52mm	TE190164 52mm

BEARING KITS	1500KG	1750KG	2000KG
Bearing Kit 2 Lip Seal	TE190186		
Bearing Kit Marine Seal	TE190187	TE190188-02	TE190189-2000 (July 2007 onwards)

POA - Part On Application *Please advise stud pattern required.