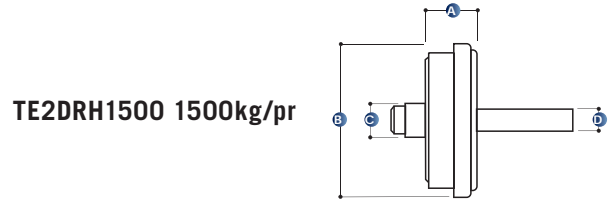


# HYDRAULIC DRUM BRAKES

CM hydraulic drum brakes are suitable for use on industrial and domestic trailers, horse floats and caravans and are an economical and efficient means of braking.



TE2DRH1500 1500kg/pr



TE2DRH2750P  
2750kg/pr



PART NO	CAPACITY PER PAIR	MECHANICAL PARK BRAKE	BRAKES	A	B	C	D	PCD Min-Max (mm)
TE2DRH1500	1500kg	No	9" x 1.75"	79mm	260mm	61mm	39mm dia	100mm - 190mm
TE2DRH1500F	1500kg	No	9" x 1.75"	79mm	260mm	61mm	39mm dia	4.50" x 5 x 1/2"
TE2DRH2750P ■	2750kg	Yes	12" x 2"	122mm	350mm	90mm	63.60mm (2.50")	5.50 x 6 x 1/2"

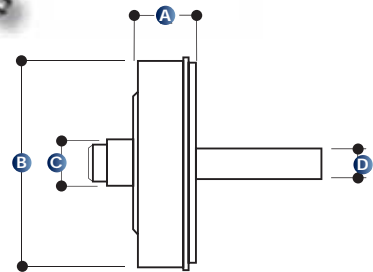
■ Only suitable for trailers under 3500kg gross laden weight and not suitable for COF class TC trailers. CM can supply drum brakes suitable for COF trailers (over 3500kg gross laden weight). Please contact us for a quote.

# ELECTRIC DRUM BRAKES

CM offer a range of 10" and 12" electric brakes for trailers up to 3500kg. To see how electric brakes work, go to the section on page 49.



1500kg and 1750kg/pr



TE2DRE2750P: 2750kg/pr

Electric brakes are not designed for use in the heavy transport industry. Designed for use on light trailers up to 3500kg gross laden weight.

PART NO	CAPACITY PER PAIR	MECHANICAL PARK BRAKE	BRAKES	A	B	C	D (DIAMETER)	PCD Min-Max (mm)
TE2DRE1500P	1500kg	Yes	10" x 2.25"	87mm	274mm	61mm	39mm	100-180mm
TE2DRE1500PF	1500kg	Yes	10" x 2.25"	87mm	274mm	61mm	39mm	4.50" x 5 stud
TE2DRE1750P	1750kg	Yes	10" x 2.25"	87mm	274mm	61mm	45mm	100-180mm
TE2DRE1750PF	1750kg	Yes	10" x 2.25"	87mm	274mm	61mm	45mm	4.50" x 5 stud
TE2DRE1750HDP	1750kg	Yes	10" x 2.25"	93mm	274mm	105mm	50mm	140-180mm
TE2DRE2000	2000kg	Yes	12" x 2"	115mm	350mm	107mm	50mm	5.50" x 6 stud
TE2DRE2750P	2750kg	Yes	12" x 2"	122mm	350mm	90mm	63.60mm (2.50")	5.50" x 6 x 1/2"
TE2DRE3500	3500kg	Yes	12" x 2"	115mm	350mm	107mm	63.5mm	5.50" x 6 stud