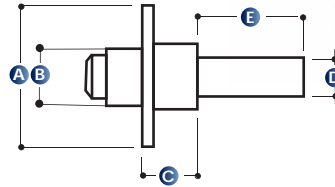


CM TRAILER HUBS & STUBS

All CM 1000kg, 1500kg, 1750kg, 2000kg and 2750kg trailer hubs have a galvanised finish, maintaining an excellent appearance for many years. CM Hubs are CNC machined from high quality ductile iron castings and are fitted with quality Japanese taper roller bearings.



Axles are CNC precision machined from 1045 medium tensile steel

Seals are high quality, 2-piece triple-lip marine. (2-lip automotive seals are available on request)

2750kg hub seals are automotive 2-lip, marine seals available at extra cost

PART NO	CAPACITY PER PAIR	A	B	C	D	E	PCD (Min - Max)
TE1HM1000-09G__	1000kg	140mm	53.8mm	59mm	39mm dia	115mm	95mm - 110mm
TE1HM1000-12G__	1000kg	140mm	53.8mm	59mm	39mm dia	190mm	95mm - 110mm
TE1HS1500-09G__	1500kg	150mm	56mm	59mm	39mm dia	115mm	95mm - 120mm
TE1HS1500-12G__	1500kg	150mm	56mm	59mm	39mm dia	190mm	95mm - 120mm
TE1H01500-09G__	1500kg	190mm	56mm	59mm	39mm dia	115mm	95mm - 150mm
TE1H01500-12G__	1500kg	190mm	56mm	59mm	39mm dia	190mm	95mm - 150mm
TE1HS1750-12G__	1750kg	150mm	56mm	59mm	45mm dia	190mm	95mm - 120mm
TE1H01750-12G__	1750kg	190mm	56mm	59mm	45mm dia	190mm	95mm - 150mm
TE1HL1750	1750kg	217mm	105mm	67mm	45mm dia	190mm	135mm - 180mm*
TE1HS2000-12G__	2000kg	190mm	65mm	71mm	50mm dia	170mm	114mm - 150mm
TE1HS2750	2750kg*	183mm	90mm	51mm	63.50mm	240mm	5.50" x 6 x 1/2"

* Suits Land Rover

* 2750kg hub seals are automotive 2-lip, marine seals available at extra cost

STUDDING SUFFIXES

All hub and stub sets have a 2-digit suffix to the part number from the studding table below. Select your part number from the chart above and add the suffix from the studding table below, eg: TE1HS1500-09G55 is a 1500kg Hub and Stub Set with 9" axles drilled and studded Ford Falcon 4.50" x 5 stud x 1/2".

BLANK	4 STUD	5 STUD	6 STUD
B1 = Blank 5 x 7/16" studs	41 = 100mm x 4 stud x 7/16"	51 = 100mm x 5 stud x 7/16"	68 = 4.50" x 6 stud x 1/2"
B2 = Blank 5 x 1/2" studs	42 = 4.00" x 4 stud x 7/16"	52 = 4.00" x 5 stud x 7/16"	69 = 5.50" x 6 stud x 1/2"
	43 = 4.25" x 4 stud x 7/16"	53 = 4.25" x 5 stud x 7/16"	
	44 = 4.50" x 4 stud x 7/16"	54 = 4.50" x 5 stud x 7/16"	
	45 = 4.50" x 4 stud x 1/2"	55 = 4.50" x 5 stud x 1/2"	
		56 = 4.75" x 5 stud x 7/16"	
		57 = 120mm x 5 stud x 7/16"	
		58 = 5" x 5 stud x 7/16"	
		59 = 150mm x 5 stud x 1/2"	

HUBS & STUBS